

Manual
Pulse Recorder & Analyser
PRA
Version 25.0.2.2

Marek Dolleiser, Sydney 2025.02.19

Table of Contents

General information.....	3
Introduction.....	3
Changes in current version.....	3
Requirements.....	3
Installation.....	3
Contact.....	4
Hardware.....	4
Menu.....	5
File.....	5
Action.....	5
View	6
Settings	6
Help.....	7
Windows.....	7
Main.....	7
Counting Rate vs Time.....	8
Counting Rate Histogram.....	8
Interval Histogram.....	8
Pulse Width Histogram.....	9
Pulse Height Histogram.....	9
Audio Input.....	11
Data Acquisition and Analysis.....	12
Audio Interface Settings.....	15
Pulse Shape Editor.....	16
Calibration.....	17
Advanced Pulse Filter.....	18
Mathematics in PRA.....	19
Pulse Recognition.....	19
Baseline method.....	19
Pulse shape method.....	20
Pulse shape correction.....	21
Calibration.....	22
Fit slope.....	22
Fit linear.....	22
Interpolation.....	23
Dead time calculations.....	23
Region Of Interest statistics.....	23
Gaussian correlation filter.....	25
Subtracting Background.....	26
Keyboard Shortcuts.....	27
File Structures.....	28

General information

General information.....	3
Introduction.....	3
Changes in current version.....	3
Requirements.....	3
Installation.....	3
Contact.....	4
Hardware.....	4

Introduction

The **Pulse Recorder and Analyser** (PRA) application uses computer's sound adaptor to analyse in real time signal received from different detectors, as Geiger counters, proportional gas counters, scintillation counters, semiconductor detectors etc. By using this software you can convert your computer in the multi-channel analyser (MCA) working at the same time in pulse height analyser (PHA) and scaling mode (MCS), without buying expensive specialised hardware. Additionally, parameters like scaling time or pulse height channel width can be changed after data has been acquired. Obviously, there are some limitations to the functionality of such instruments, mainly because of sampling rate usually limited to 48000 samples/s. However, if counting rate is reasonably low (less than 1 000 pulses/s), the results are very good. PRA was designed for use in experiments with weak radioactive sources which are common in teaching laboratories.

Changes in current version

1. Changed: Number of calibration data points has been increased from 8 to 16.
2. Changed: Left time of data acquisition takes into account also counting rate and maximum number of counts, not as before just time limit setting.
3. Changed: "Export ..." menu items shifted to new sub-menu.
4. Added: Displays "Pulse Shape Acquisition !" message in windows title during execution of "Pulse Shape Acquisition" command.
5. Changed: "Export Coincident Pulse Height" menu to "Export Coincident Pulse Height and Delay" to incorporate additionally time difference between coincided pulses.
6. Pulse Height Histogram information displays negative number of counts in bin if background counts are larger than actual counts. Use to be zero in earlier version.

Requirements

PRA can run on any computer with a sound adaptor and Windows (XP or newer version) operating system. It also runs on Linux and Macintosh boxes under windows emulators, but its performance depends on how well your audio hardware is supported in Linux. Memory requirement depends mainly on the maximum number of pulses and number of audio channels.

Installation

PRA does not need any special installation, just copy "PRA.exe" and "PRA.pdf" files to a folder of

your choice and run the application. It is purely portable application and can be run from any location. Sometimes you may need administrator rights to install PRA in some special Windows folders as for example: "Program Files". For convenience, you can make a link to PRA on your desktop or in the Windows menu, but you will be responsible for removing it if you decide to uninstall the program. To uninstall PRA you have simply to delete "PRA.exe", "PR.pdf" and "PRA.ini" files. The PRA program itself does not write any information to the Windows Registry. PRA comes in two versions: 32 bits and 64 bits. The 64 bits version works only on 64 bits operating system. The 32 bits version works on both: 32 bits and 64 bits operating systems. To read "PRA.pdf" file you need PDF reader application available on your system. If you like to open PRA program automatically when you mouse click over ".pls" or ".wav" file, you have to associate those type of files with PRA program. To do so just click right mouse button over document file and from the menu choose *Open With*→*Choose Program...* and then *Browse...* and select PRA program file. To make your association permanent check "Always use the selected program to open this kind of file" and confirm your choice.

Users who like typical Windows installation procedure please use PRA installer.

Contact

Should you have any questions, comments or suggestions regarding PRA please e-mail

mdolleiser@gmail.com

New version of the PRA application (if any) can be found at

<http://www.gammaspectacular.com/marek/pr/index.html>

Hardware

PRA analyses signal from the sound interface which can be selected from the menu: *Settings* → *Audio Interface*. Additionally, you may also need to change audio interface settings in your Windows operating system by using *Audio Control Panel* which comes with your audio interface or to use *Windows Recording Control*. To access *Recording Control* use *Settings* → *Control Panel* from the main Windows menu and then choose *Sound and Audio Devices* controller. Alternatively, you can click over loudspeaker icon with right mouse button and choose *Adjust Audio Property*. I usually use *CD Player* or *Line In* input. Pulses produced by most detectors are quite narrow and hardly can be sampled accurately by a sound adaptor. To fix this problem I use a simple low-pass RC-filter at the input. This solution works well with Geiger counter and NaI scintillation detector. For gas proportional counter used to detect X-rays, I built a simple amplifier based on OPA129 mainly to match high output impedance of the detector to low input impedance of the audio input, and also to amplify the signal to the line level ≈ 0.3 V.

Menu

Menu.....	5
File.....	5
Action.....	5
View	6
Settings	6
Help.....	7

File

The **File** menu contains following items:

1. **Open** – opens data previously saved to a file. Default extension of the file is “.pls”. You can also open “.wav” sound file and it will be immediately analysed using the current settings, the same way as if the signal is connected to the sound card input. This mode of data acquisition is only useful when you are adjusting trigger settings because usually, the “.wav” file is larger than the “.pls” file. The advantage of using “.wav” file is that you can open the same file with different settings and to compare the results of analysis. The “.wav” file can be recorded using [InTune](#) application. To record stereo files use any good sound recording program as for example [Audacity](#) and save it as Windows PCM format (.wav).
2. **Load Data** – opens data file without changing current audio settings, pulse shape, and regions of interest.
3. **Obtain Pulse Shape from Sound File** – uses an existing sound file to determine pulse shape. It is an alternative to the Pulse Shape Acquisition method.
4. **Save** – saves all acquired data and settings to a file, which later can be opened by PRA.
5. **Export** → **Counting Rate vs Time** – saves counting rate vs time histogram as a text file which can be imported into other applications for further data analysis. The column separator is the “tab” symbol. Exported data depends on the [Settings](#).
6. **Export** → **Counting Rate Histogram** – as above but a different histogram.
7. **Export** → **Interval Histogram** – as above.
8. **Export** → **Pulse Width Histogram** – as above.
9. **Export** → **Pulse Height Histogram** – as above.
10. **Export** → **Pulse Height Histogram vs Time** – saves a matrix of pulse height histograms as text file.
11. **Export** → **Regions of Interest** – saves as text file ROIs selected in the [Pulse Height Histogram](#).
12. **Export** → **Regions of Interest vs Time** – saves a matrix of gross number of counts in regions of interest as text file.
13. **Export** → **Coincident Pulses Height and Delay** – saves as text file heights of simultaneous pulses and time interval of the right and the left channels..
14. **Exit** – quits the application, equivalent to closing the main window.

Action

The **Action** menu contains following items:

1. **Start Data Acquisition** (keyboard shortcut **A**) – starts data acquisition. All current data is

discarded.

2. **Continue Data Acquisition** (keyboard shortcut **C**) – starts data acquisition appending results to existing data. This option should not be used if time dependence consistency is important.
3. **Stop Data Acquisition** (keyboard shortcut **S**) – when you start data acquisition, all data previously acquired is discarded, so always save your data to the file after data acquisition stops. Data acquisition stops automatically if application reaches any of data acquisition limits (see [Settings](#)). This menu entry works also if data acquisition was started from Start Pulse Shape Acquisition. In this case, [Edit Pulse Shape](#) window will open with applied new pulse shape parameters.
4. **Start Pulse Shape Acquisition** – starts data acquisition with the goal to produce automatically averaged shape of the pulse. You can use this option if you like to average many pulses. In this mode, the program always uses baseline triggering and the pulse shape central point is a top of the pulse. When using this option and your pulse threshold is smaller than 10 arb.u, higher settings of the trigger threshold are automatically applied (10 arb.u. to 90 arb.u.). Please, ensure that polarity of pulses is indicated correctly by the pulse threshold sign.
5. **Set background** – sets current pulse height histogram as the background which can be automatically subtracted from pulse height histogram of the following data acquired, opened or loaded in PRA. You can switch on or off displaying data with subtracted background by means of *Subtract background* check box in the [Data Acquisition and Analysis](#) dialogue box. It is obvious that the background data and the eligible data should be taken at the same settings. PRA assumes that the background is not changing during acquisition time.
6. **Sound On/Off** (keyboard shortcut **Space**) – switches on and off playing in real time sound representing arriving pulses. Larger pulses are played with a higher pitch. This implemented in PRA v7 feature, is primarily for visually impaired people, but also can be quite entertaining for others. It is absolutely possible to recognise many of the simple radioactive sources by listening to the sound. I can recognise ^{54}Mn , ^{57}Co , ^{60}Co , ^{133}Ba , ^{109}Cd , and ^{137}Cs when using NaI detector.

View

The **View** menu contains following items:

1. **Counting Rate vs Time** – opens the [Counting Rate vs Time](#) window.
2. **Counting Rate Histogram** – opens the [Counting Rate Histogram](#) window.
3. **Interval Histogram** – opens the [Interval Histogram](#) window.
4. **Pulse Width Histogram** – opens the [Pulse Width Histogram](#) window.
5. **Pulse Height Histogram** – opens the [Pulse Height Histogram](#) window.
6. **Audio Input** – opens the [Audio Input](#) window.

Settings

The **Settings** menu contains following items:

1. **Data Acquisition and Analysis** – opens the [Data Acquisition and Analysis](#) window.
2. **Calibration** – opens the [Calibration](#) window.
3. **Audio Interface** – opens the [Audio Interface Settings](#) window.
4. **Pulse Shape** – opens the [Pulse Shape Editor](#) window.
5. **Advanced Filter** – opens the [Advanced Pulse Filter](#) window.
6. **Load Settings ...** – opens and applies saved program settings.

7. **Save Settings** – saves current program settings to the default configuration file “PRA.ini”. This file is saved in the PRA program directory and the user needs to have rights to write to this folder.
8. **Save Settings As ...** – saves current program settings to file at chosen location which you can apply later by “Load Settings ...” command.

Help

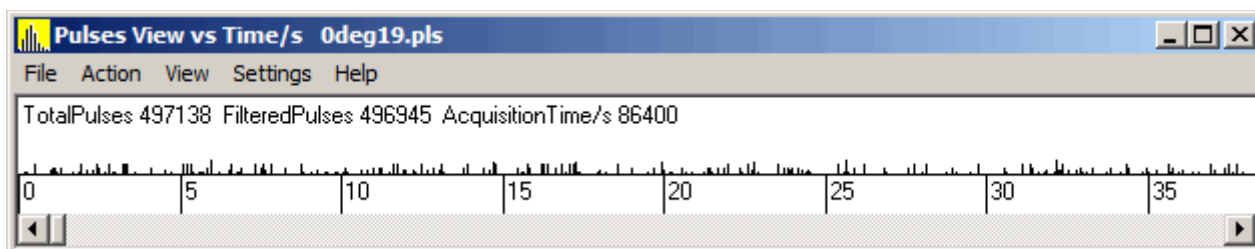
The **Help** menu contains the following items:

1. **Help Topics** – opens “PRA.pdf” help file.
2. **About** – displays version and copyright information about the PRA application.

Windows

Windows.....	7
Main.....	7
Counting Rate vs Time.....	8
Counting Rate Histogram.....	8
Interval Histogram.....	8
Pulse Width Histogram.....	9
Pulse Height Histogram.....	9
Audio Input.....	11
Data Acquisition and Analysis.....	12
Audio Interface Settings.....	15
Pulse Shape Editor.....	16
Calibration.....	17
Advanced Pulse Filter.....	18

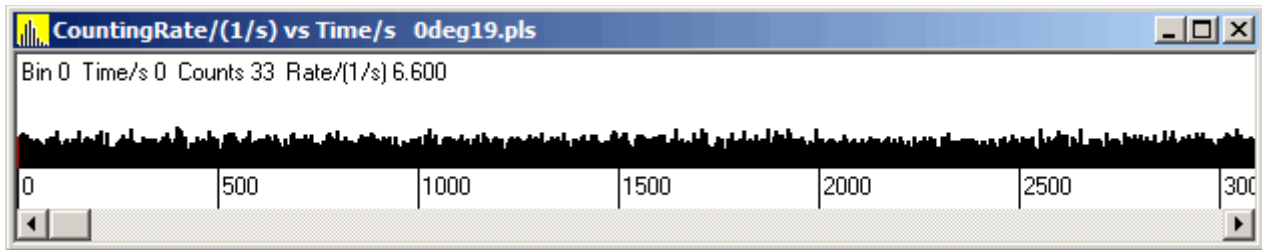
Main



This window shows simplified pulses (only width and height) on the time scale. The most important elements of the window are: the window's title which contains also opened file name (as all other histogram windows), the application's menu, the time scale which can be change by using the ↑ and ↓ keys on the keyboard (when the window is active), and the information bar which displays a total number of recorded pulses, a number of filtered pulses (which is affected by using *Analysed data selection* in the *Data Acquisition and Analysis* window), and the total data acquisition time. During data acquisition also the remained time period is displayed.

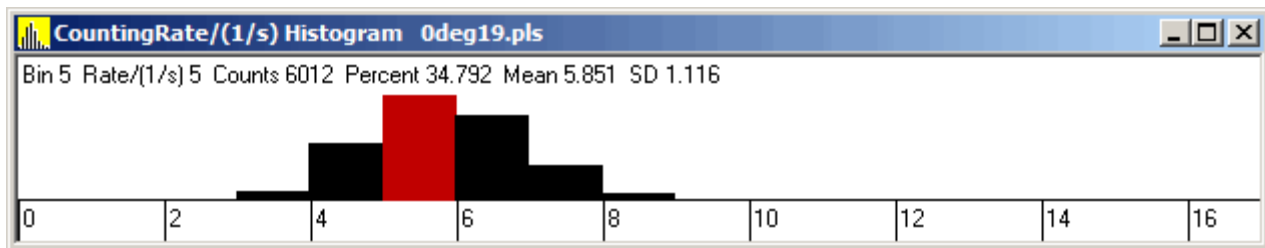
Closing this windows quits the application.

Counting Rate vs Time



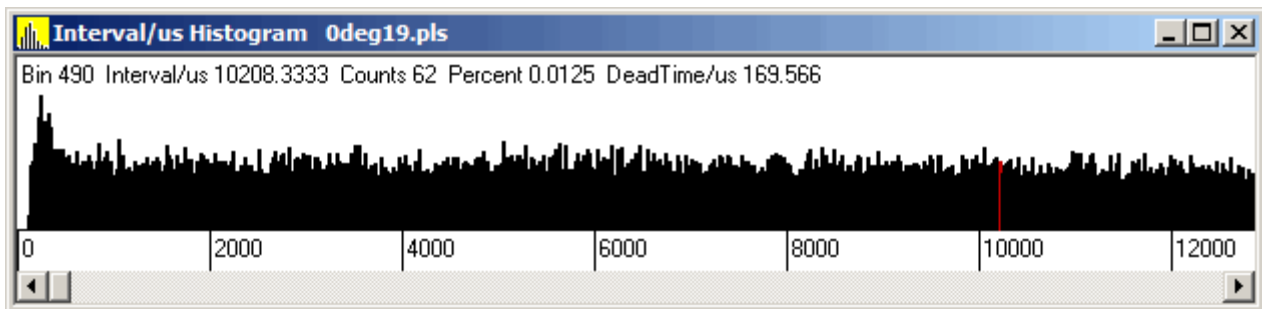
This window displays counting rate as a function of time. Graphically it looks like histogram but it is not. In histogram on the horizontal axis (abscissa) are bins with values of the measured variable and on vertical axis (ordinate) frequency (occurrence) of events (number of counts) in each bin. On this display, the abscissa represents bins (steps) in time and the ordinate shows frequency of pulses (counting rate). *Counting rate vs Time* is very important when analysing decay of radioactive materials. In this case, the *Time step* parameter should be set smaller than a radioactive isotope's half lifetime, but large enough to avoid bins with zero counts if possible. Information about the selected bin (indicated by the red colour) is displayed under the title bar.

Counting Rate Histogram



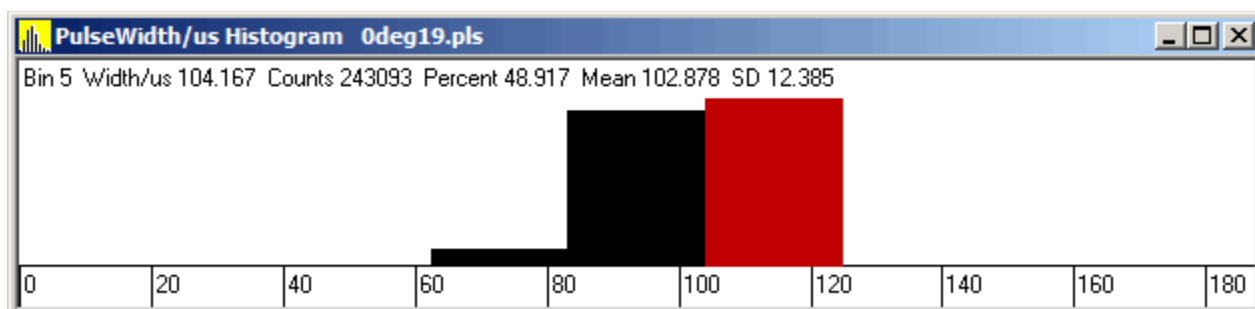
This histogram shows the distribution of the data displayed in the *Counting rate vs Time* window. It is important to set proper parameters for its bin size and *Time step* in *Counting rate vs Time* to build histogram which best represents the data. PRA calculates minimum size of the bin in this histogram and bin size can be the only multiplicity of this value. The displayed information is related to the selected bin (red colour) and the mean value and the standard deviation of the counting rate distribution.

Interval Histogram



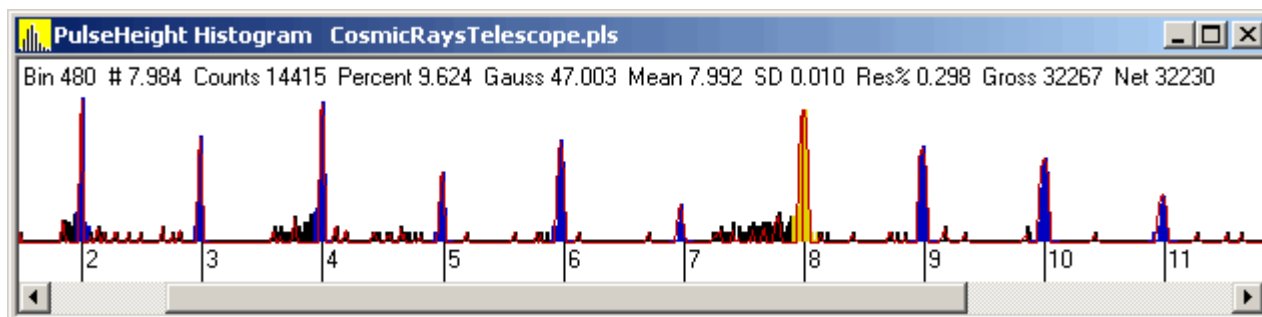
This window displays a histogram of the time interval of pulses. If the S-fold parameter is set to one, it represents the distribution of an interval between consecutive pulses. In this case, if there is not dead time present (which is not true in any real case at least because of a finite pulse width) and average counting rate is constant, the histogram should be of an exponential decay shape. The biggest value should be in the first bin. For real data usually, we observe fewer pulses in a few first bins than expected. PRA uses interval distribution to calculate the dead time of the data acquisition system. The displayed information is related to the selected bin indicated by the red colour. Also, if *S-fold* equals to one, the approximate value of the dead time is displayed.

Pulse Width Histogram



This window shows a histogram of the pulse width. The pulse width is recognised in PRA during data acquisition as the period from a first sample when the voltage exceeds the threshold to the first sample when the voltage drops below the threshold. With such definition, the pulse width depends on all parameters for the pulse triggering. Even if it does not tell much about real pulse width (especially if pulse passes through by low-pass filter on the input of the sound interface), it can be still useful. When the Shape tolerance method option is enabled, a pulse width is also affected by the shape threshold value (listed under Shape tolerance method check box) and usually leads to a very short pulse width, which has no expected physical meaning of the pulse width. In such a case pulse's width is a good indication of the period when left and right channel pulses are considered to be in coincidence. The displayed information is about selected bin indicated by the red colour.

Pulse Height Histogram



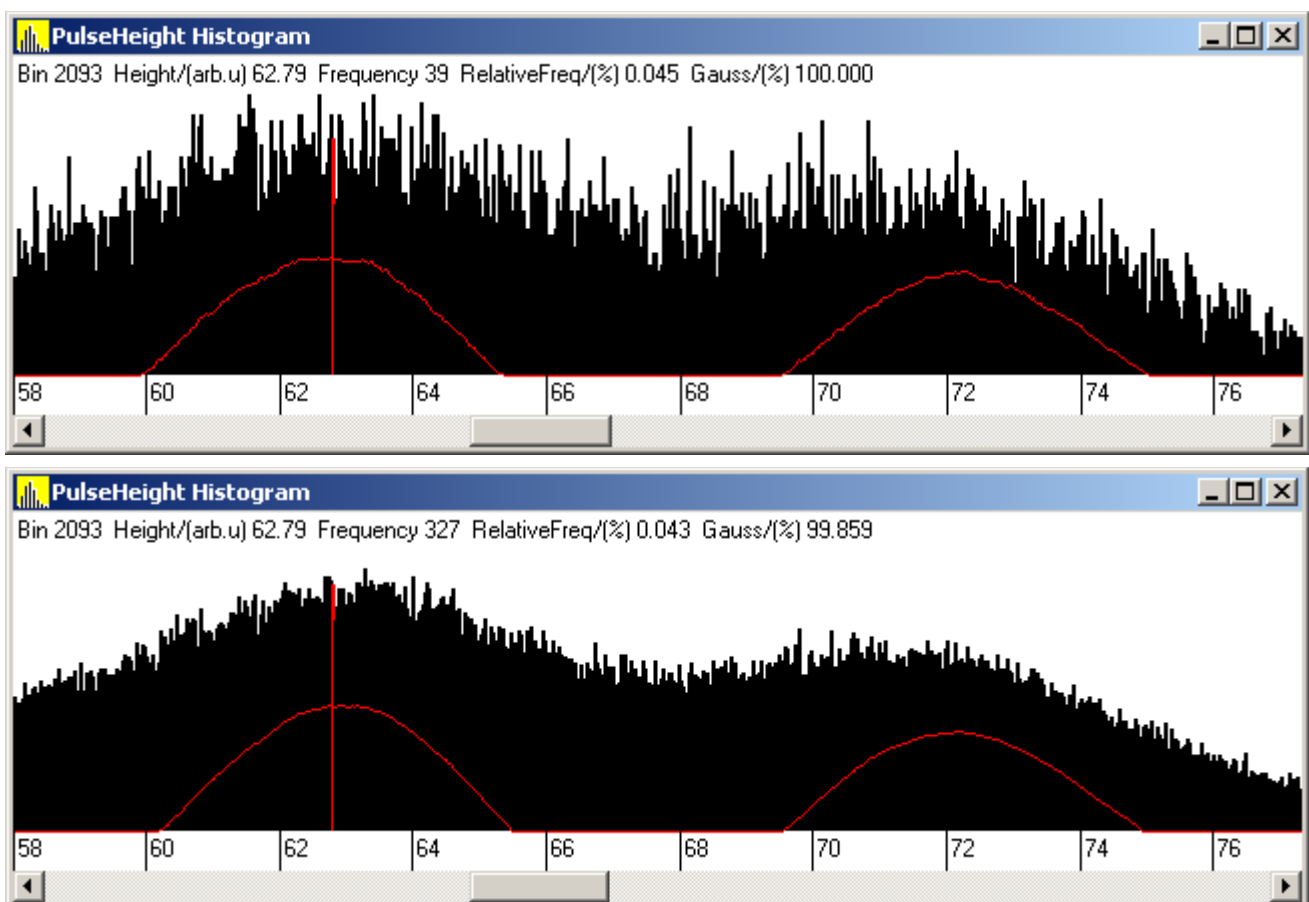
This window displays pulse height histogram. For many detectors, pulse height is proportional to

the energy deposited in the detector¹ by an elementary particle such as electron, proton, alpha, etc. For this reason, it is very useful to produce spectra of radioactive sources. Pulse height is recognised by PRA during data acquisition. The triggering method and triggering parameters can be set in the [Settings](#) window. The pulse height is measured in arbitrary units (100 arb.u corresponds to the maximum value which a sound adaptor can sample) and it needs calibration before using it as a multi-channel analyser. The displayed information is about selected bin indicated by the red colour.

The user can also define up to 32 'Regions Of Interest' (ROI) in each channel. To do this set the current bin where you like ROI to start and then press key **B** and then move the cursor to a position where you like ROI to end and then press key **E**. Alternatively you can select ROI with the mouse. Depress **Ctrl** key and then click and hold left mouse button at the position which you like ROI to begin, drag the cursor where ROI should end and release the mouse button. If a new ROI overlaps any existing ROI(s), the last one is automatically deleted. You can also delete ROI by selecting current bin inside an ROI and pressing **Delete** key. ROIs are indicated by the blue colour. When the current bin is inside ROI the colour changes to dark yellow. Additionally, an information about the peak's statistics is displayed under the title bar. This can be useful to obtain more accurate parameters of the selected peak (or deep). Parameters are calculated using standard statistical analysis on the net counts. Net counts are obtained by subtracting the background from the peak. The background is estimated as a straight line connecting first and last sample in ROI.

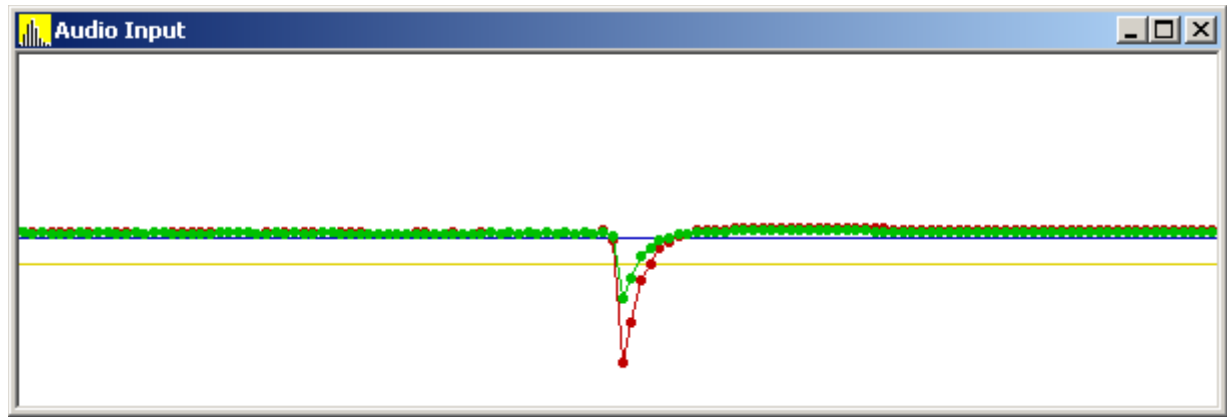
You can export all ROIs as a text file by using *Export Regions of Interest* from the *File* menu.

If *Show Gaussian correlation* check box in *Data Acquisition and Analysis* dialogue is checked, then also 'Gaussian correlation' (actually it is a correlation between normalised discrete Gaussian function in range $(-2\sigma, 2\sigma)$ and pulse height histogram) is calculated and displayed at pulse height histogram window. Most of the nuclear detectors exhibit a simple dependence of standard deviation (the spread) of the peak and its mean value. The standard deviation is proportional to square root of the mean. Figures below shows pulse height histograms respectively for the small and large number of counts. If the current bin is at the position where the Gaussian correlation value is larger than zero, then you can quickly select ROI by pressing **D**, **F**, **G**, or **H** key (each one selects different width of the ROI around the peak).



In both cases 'Gaussian correlation' curve (red colour) is quite smooth even so the first histogram is built with many times smaller number of counts than the second one. You can use positions of local maxima of those curves to approximate quite accurately mean values of histogram peaks without using ROI (or to find which part of histogram should be selected).

Audio Input



This window shows a signal at the inputs of the audio interface. The dots show the sampled values. Red and green colours show the left audio channel and the right audio channel respectively. Yellow and blue horizontal lines correspond to the trigger levels. Full height of the display corresponds to the full range of ADC of the sound interface (-100 arb.u to 100 arb.u). The picture shows the same signal from NaI scintillation detector applied to both, left and right channels, where boost gain was set equal 2 and 1 on left and right channels respectively. By using "T" key user can toggle between normal (default when starting PRA) auto trigger modes which work the same way as on the standard oscilloscope.

Data Acquisition and Analysis

Data Acquisition and Analysis

Data acquisition parameters

1 Min height/arb.u 1 Boost gain ☐ Use shape method

86400 Acquisition time /s 1000000 Max pulses 10 Max distortion/arb.u

Analysed data filter

Channel selection 0 Beginning time /s 0 Correction

Left All 86400 Duration time /s ☐ Use advanced filter

Counting rate vs Time

1 Time step /s ☐ Log scale

Counting rate histogram

1 Bin size /(1/s) ☐ Log scale

Interval histogram

20.8 Bin size /μs 1 S-fold ☐ Log scale

Pulse width histogram

20.8 Bin size /μs ☐ Log scale

Pulse height histogram

0.1 Bin size /arb.u ☐ Use calibration ☐ Gaussian correlation ☐ Log scale

☐ Subtract background ☐ Sum quantity

Comments

<2019/09/20 10:00:53 0, 2019/09/20 10:01:02 9>

Apply

Important: Controls in the dialogues whose names are in the sunken frame should be set before starting data acquisition. Changing their values after collecting the data have no influence on analysed data. However, for testing only they can be changed during data acquisition without stopping the action. In such a case the resulted data will be not consistent.

The **Data Acquisition and Analysis** window is divided into 9 groups:

1. **Data acquisition parameters** – All settings in this group should be set before starting data acquisition. You can choose one of two different pulse recognition methods based on a shape analysis or on an absolute value. When the *Use shape method* is selected, all parameters in this group are important. In this case, the application calculates pulse height as a value of cross-correlation function (the sum of products) of sampled values and values defined by the pulse shape. If it exceeds the *Min height* value then the current pulse shape and defined pulse shape are compared using the sum of squares of differences between the two shapes called here ‘distortion’. If the distortion is smaller than the *Max distortion* value, the pulse is counted. The value of the shape tolerance should be set between 0 and 100. The value of 0 corresponds to the shape of the current pulse to be identical with the predefined one. The value of 100 corresponds to the poor correlation between the current pulse and predefined shape. Proper settings of the shape tolerance value depend on the defined pulse shape, but

the value of 10 as the starting point is a good choice. To obtain very good pulse height resolution, the pulse distortion should be very small, say 1. Unfortunately, this small distortion value filters out a lot of the pulses. Version 9 of PRA try to solve this problem by introducing correction parameters which correct pulse height according to the accuracy of the pulse shape. By using these parameters one can obtain almost the same good resolution using a maximum distortion of 20 as with distortion 1 without correction. It gives a boost to the number of counts especially at lower pulse heights (lower energy) where pulses are rejected frequently because of a small signal-to-noise ratio. I found that correction parameters in range 50 to 100 are giving the best results, but certainly, it depends on the pulse shape and should be optimised in every case. Version 10 of PRA let you collect the data with a high value of the max distortion where most of the pulses are accepted and then use “Advanced Pulse Filter” to select required range later. If you do not like to use pulse height correction, set it to 0.

If the *Use shape method* is not checked, only pulse height threshold parameters are taken into account to trigger the pulse. In this case, the value of the baseline is calculated over many samples and a difference between the top of the pulse and the baseline becomes a pulse height.

The sign of the threshold decides about the polarity of triggered pulses: plus for positive and minus for negative. As an example, a typical pulse shape taken from the gas proportional counter is shown below. The shape is mostly dependent on the amplifier. To produce quickly pulse shape you can use *Action → Start Pulse Shape Acquisition* command.

New in version 11 are *Boost gain* parameters. Their values can be set in range 1 to 100. It is an additional adjustment of the sound interface gain which does not change the gain set in the sound recording control panel. This feature can be useful if the observed pulses are smaller than 10 arb.u. and the gain control is already set to maximum. Also, fine adjustment of the gain in the left and the right channel can be handy.

Additionally you can set a maximum value for acquisition time (not larger than 3 155 692 600 s which is 100 years) or a number of pulses (maximum 36 000 000 in 32 bit Windows or 100 000 000 in 64 bit version). If your data acquisition process exceeds any of those limits it will stop immediately. When you are setting limit of number of pulses consider to choose number of pulses which you really need to be recorded and number of audio channels which you are going to use, save settings and quit PRA. When you start the program again, only memory which is necessary to handle that number of pulses will be allocated. For example total memory used by PRA for 1 000 000 pulses limit and single audio channel is 83 MB and for 100 000 000 pulses and two audio channels is 4.54 GB. 100 000 000 pulses is enough to keep recording at the rate 1000 pulses per second for almost 28 hours.

2. **Analysed data filter** – Before you start editing settings you should set audio channel of your choice using *Channel selection* combo box. When you select any of the first three options then all parameters displayed in the dialogue are applying to the left audio channel. If your channel selection starts with Right... the parameters are from the right channel. You can set beginning and duration of the data that you like to select for analysis. It is usually good practice to start data acquisition earlier than some interesting event is going to happen (for example a sudden increase in counting rate) and after stopping data acquisition select an only interesting section of the acquired data. Also, you can select the audio channel from which histograms are built and displayed. For example, if you like to see only those pulses from the left channel which occurs at the same time as another pulse in the right channel (time coincidence), choose *Left Coincidence*. Advanced events filtering including pulse height, pulse distortion and the pulse width is possible by checking “Use advanced filter”

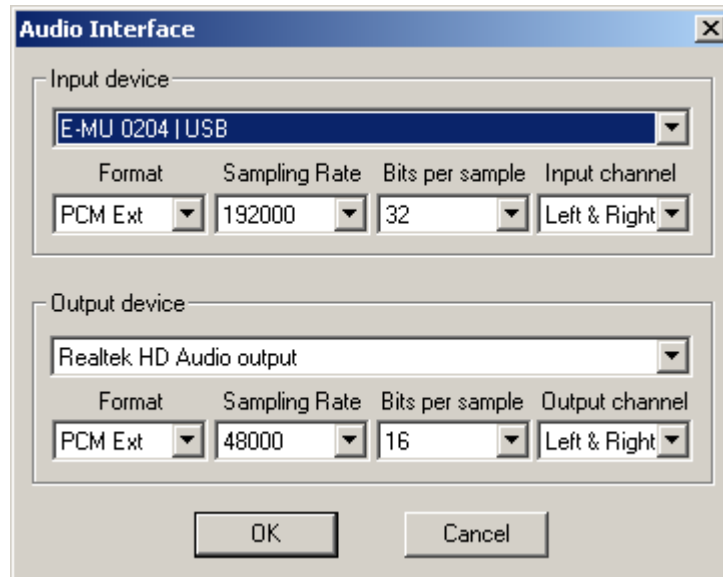
and editing entries in “Advanced Pulse Filter” dialogue box window.

3. **Counting rate vs Time** – there is only one parameter which you can change: *Time step*, the period that is used to calculate counting rate. There is also the checkbox which you can use to display statistics in logarithmic scale. The *Time step* is also used for exporting “Pulse Height Histogram vs Time” and “Regions of Interest vs Time”.
4. **Counting rate histogram** – as for all other following histograms there is *Bin size* parameter and *Log scale* check box.
This histogram uses the *Counting rate vs Time* data, and it is affected by its *Time step* parameter. For the radioactive source which does not change its intensity, the counting rate can be described as Gaussian or Poisson distribution, depending on chosen bins' size and intensity of the source.
5. **Interval histogram** – you can change additionally *S-fold* parameter. If the *S-fold* parameter is one then the interval between every two consecutive pulses is counted, if it is two, then the interval between every first and third pulse is counted, etc. The smallest possible bin size is selected automatically when “.pls” or “.wav” file is opened and after starting data acquisition with a new sampling rate.
6. **Pulse width histogram** – you can change two settings as with other histograms. The bin size is set automatically the same way as in *Interval histogram*. The pulse width is measured at the threshold level, but if you are using pulse shape analysis the width of the pulse is very short (usually one or two sampling periods) and it does not correspond to the real pulse's width. Pulse width is measured in microseconds, but it is quantised by the sampling period.
7. **Pulse height histogram** – the settings are identical as for *Pulse width histogram* but pulse height is analysed rather than pulse width. Additionally, there are four check boxes: *Subtract background*, *Use calibration*, *Gaussian correlation* and *Count energy*. Checking *Subtract background* will subtract data which was previously defined as a background from the current pulse height spectrum. If the *Calibration* check box is checked the “Pulse height histogram” uses parameters from the *Calibration* dialogue box where you can specify parameters for the left and the right audio channel. This check box also is affecting data which is exported using *Export Pulse Height Histogram* menu. If *Show Gaussian correlation* is checked, then the result correlation curve of predicted Gaussian distribution and pulse height histogram is also shown in the “PulseHeight Histogram” window. *Sum quantity* check box enables displaying value of quantity deposited in each bin rather than number of events. This feature can be useful in radiation dosimetry if particle energy is used in calibration. For example, if x-axis is calibrated in keV, the “Sum” in information bar displays energy deposited by particles of selected energy in the bin. If you select a range of energies, then also “Gross” and “Net” values represents total energy deposited by all particles in the selected range.
8. **Comments** – contain a text which is saved with the data. PRA automatically is including the beginning and the end of all data acquisition sessions, for example: <2017/07/23 16:45:46 0, 2017/07/23 16:45:51 5.5><2017/07/23 16:46:20 5.5, 2017/07/23 16:46:28 13.5>. This indicates that data acquisition was done in two sessions, one started in 23th of July 2017 at 4:45:46 pm and ending the same day at 4:45:51 pm and second data acquisition session started the same day but at 4:46:20 pm and finished at 4:46:28 pm. The first session was 5.5 s long and the second session extended total acquisition time to 13.5 s. Of course you can edit comments to your needs before saving the data.

The *Apply* button applies the current settings. You can save the settings from menu *Settings* → *Save Settings* or *Settings* → *Save Settings As ...*. Saved file can be later loaded by using the *Settings* →

Load Settings ... menu. From version 4.2 settings files contains also ROIs, from version 5.0 also audio settings, and from version 6.0 calibration data points and comments. This can sometimes produce a problem if your audio device has been changed. In such a case just delete a “PRA.ini” file and start the program again.

Audio Interface Settings



Use this dialogue box to select audio device and its parameters for data acquisition and playback. Higher sampling rates at the input are preferred for better height pulse resolution and higher counting rates. It is interesting that some settings are not supported as expected from hardware specification. For example, when I tried my “E-MU 0204” interface, it supported well all options when bits per sample was set to 16, but only stereo mode was working for 24 bits and 32 bits. For output, I recommend to use 48000 sampling rate and preferably on the different output device to avoid sound distortion when your hardware is not able to play smoothly. Popular sound interfaces build in motherboard perform well with both input and output set to 48000 samples per second but you can also achieve good result by using higher sampling rate which is produced by audio interface software by interpolating original sampling.

Pulse Shape Editor

The screenshot shows the 'Pulse Shape' window with two panels: 'Left channel' and 'Right channel'. Each panel contains a table of 64 samples (rows 1-64) with checkboxes and numerical values. The 'Left channel' table has columns 1-20, 21-40, and 41-60. The 'Right channel' table has columns 1-20, 21-40, and 41-60. Below each table are 'Copy' and 'Paste' buttons. At the bottom of the window are 'OK' and 'Reset' buttons.

Left channel				Right channel			
<input type="checkbox"/> 1	0	<input checked="" type="checkbox"/> 21	-12.31252	<input checked="" type="checkbox"/> 41	-14.16893	<input checked="" type="checkbox"/> 1	-32.92959
<input type="checkbox"/> 2	0	<input checked="" type="checkbox"/> 22	4.50551	<input checked="" type="checkbox"/> 42	-30.46293	<input checked="" type="checkbox"/> 2	-30.61776
<input type="checkbox"/> 3	0	<input checked="" type="checkbox"/> 23	21.79859	<input checked="" type="checkbox"/> 43	-45.33141	<input checked="" type="checkbox"/> 3	-27.74169
<input type="checkbox"/> 4	0	<input checked="" type="checkbox"/> 24	38.9882	<input checked="" type="checkbox"/> 44	-58.40295	<input checked="" type="checkbox"/> 4	-24.58585
<input type="checkbox"/> 5	0	<input checked="" type="checkbox"/> 25	55.47146	<input checked="" type="checkbox"/> 45	-69.41448	<input checked="" type="checkbox"/> 5	-21.50593
<input type="checkbox"/> 6	0	<input checked="" type="checkbox"/> 26	70.65038	<input checked="" type="checkbox"/> 46	-78.2206	<input checked="" type="checkbox"/> 6	-18.89593
<input type="checkbox"/> 7	0	<input checked="" type="checkbox"/> 27	83.95904	<input checked="" type="checkbox"/> 47	-84.79414	<input checked="" type="checkbox"/> 7	-17.14587
<input type="checkbox"/> 8	0	<input checked="" type="checkbox"/> 28	94.89169	<input checked="" type="checkbox"/> 48	-89.22126	<input checked="" type="checkbox"/> 8	-16.58692
<input type="checkbox"/> 9	0	<input checked="" type="checkbox"/> 29	103.02567	<input checked="" type="checkbox"/> 49	-91.69132	<input checked="" type="checkbox"/> 9	-17.45359
<input type="checkbox"/> 10	0	<input checked="" type="checkbox"/> 30	108.04188	<input checked="" type="checkbox"/> 50	-92.47191	<input checked="" type="checkbox"/> 10	-19.84426
<input type="checkbox"/> 11	0	<input checked="" type="checkbox"/> 31	109.73936	<input type="checkbox"/> 51	0	<input checked="" type="checkbox"/> 11	-23.68318
<input checked="" type="checkbox"/> 12	-86.66176	<input checked="" type="checkbox"/> 32	108.04497	<input type="checkbox"/> 52	0	<input checked="" type="checkbox"/> 12	-28.70296
<input checked="" type="checkbox"/> 13	-86.14095	<input checked="" type="checkbox"/> 33	103.01699	<input type="checkbox"/> 53	0	<input checked="" type="checkbox"/> 13	-34.45341
<input checked="" type="checkbox"/> 14	-84.00377	<input checked="" type="checkbox"/> 34	94.8419	<input type="checkbox"/> 54	0	<input checked="" type="checkbox"/> 14	-40.32287
<input checked="" type="checkbox"/> 15	-79.97307	<input checked="" type="checkbox"/> 35	83.82638	<input type="checkbox"/> 55	0	<input checked="" type="checkbox"/> 15	-45.58072
<input checked="" type="checkbox"/> 16	-73.85033	<input checked="" type="checkbox"/> 36	70.38246	<input type="checkbox"/> 56	0	<input checked="" type="checkbox"/> 16	-49.43597
<input checked="" type="checkbox"/> 17	-65.53516	<input checked="" type="checkbox"/> 37	55.0146	<input type="checkbox"/> 57	0	<input checked="" type="checkbox"/> 17	-51.10921
<input checked="" type="checkbox"/> 18	-55.04297	<input checked="" type="checkbox"/> 38	38.27343	<input type="checkbox"/> 58	0	<input checked="" type="checkbox"/> 18	-49.90858
<input checked="" type="checkbox"/> 19	-42.49021	<input checked="" type="checkbox"/> 39	20.7612	<input type="checkbox"/> 59	0	<input checked="" type="checkbox"/> 19	-45.3046
<input checked="" type="checkbox"/> 20	-28.12813	<input checked="" type="checkbox"/> 40	3.08508	<input type="checkbox"/> 60	0	<input checked="" type="checkbox"/> 20	-36.99526

The Edit Pulse Shape window allows editing shape of the pulse which can be used to analyse the waveform. For each channel, there are 64 consecutive sample values of which at least two different values should be enabled. To copy or paste all data in one channel use *Copy* or *Paste* buttons. The pasted data is limited to 1×64 matrix if the clipboard contains more columns or rows. The values are automatically normalised² when you click the *OK* button. The current pulse shape is saved in “PRA.ini” file by means of the *Save* (or *Save As*) command from the *Data Acquisition and Analysis* window and will be automatically loaded next time you open the application. From version 5.0 of PRA also data file “.pls” includes pulse shape and it becomes current pulse shape when you open previously saved file. The *Reset* button discards all changes and sets the last accepted values. Pulse shape shown in the above image was taken from my NaI detector with the left channel connected through low pass filter and right channel straight to the audio input. In the left channel just a part of the pulse shape is enabled, where the beginning and the end samples are set at the smallest sample values. The maximum value is around 31st sample. Not using all 60 samples can have advantage at higher counting rates.

² The mean value of the data points to be 0 and sum of its squares to be a difference between the maximum and minimum value of the data points. In PRA version 21 the numbers are multiplied by 1000 to avoid leading zeroes before decimal point.

Calibration

The Calibration dialog box is divided into two main sections: Left channel and Right channel. Each section contains three columns of input fields: Mean /arb.u, SD /arb.u, and Quantity. Below these columns are buttons for Clear, Copy, and Paste. At the bottom of each section are dropdown menus for Calibration mode and Quantity /Units, followed by an Apply button at the very bottom.

Left channel			Right channel		
Mean /arb.u	SD /arb.u	Quantity	Mean /arb.u	SD /arb.u	Quantity
0	0	0	0	0	0
0	0	0	0	0	0
0	0	0	0	0	0
0	0	0	0	0	0
0	0	0	0	0	0
12.355	0.592	356.013	0	0	0
19.248	0.705	569.698	0	0	0
22.143	0.814	661.659	0	0	0
35.094	1.017	1063.656	0	0	0
38.404	0.854	1173.24	0	0	0
43.797	0.852	1332.508	0	0	0
47.568	1.188	1460.851	0	0	0
57.271	1.423	1770.228	0	0	0
82.127	1.603	2505.748	0	0	0
84.03	1.758	2614.533	0	0	0
103.147	1.784	3197.711	23	1	662

Calibration mode: Fit slope Quantity /Units: Energy /keV

Calibration mode: Fit slope Quantity /Units: Energy /keV

Apply

In this dialogue box, you can specify up to sixteen calibration data points for each channel. *Clear* buttons set all values in the corresponding channel to zero. To copy or paste all data in one channel use *Copy* or *Paste* buttons. When you copy, data on the clipboard is in text form which consists of three tab-separated columns. Paste function works with a clipboard containing text with column separated by tabs, spaces, and semicolons. The number of columns and rows pasted from the clipboard is limited to 3×8 matrix. Also, you can choose calibration mode from *Fit slope*, *Fit linear*, and *Interpolate* options. The popular and recommended for most of the detectors is a linear fit. Similar to linear is slope fit, where calibration line is forced to go through (0,0) point. This can be useful for example if you calibrate your system using a source which has only peaks at higher energy and no low energy peaks are available. PRA uses also standard deviation of calibration peaks (column *SD*) for weighting calibration points and for Gaussian correlation parameters. *Interpolate* option is for calibrating detector systems where energy versus pulse height dependence is nonlinear. PRA uses simple linear interpolation between calibration points. Energy beyond the last calibration point is extrapolated from the two largest data. If you have just one calibration point, all three method gives you the same result. Text edit box *Quantity/Units* lets you assign a different name (maximum 31 characters) for quantity and units which you are using. PRA is mainly used for acquiring energy spectra, but you have freedom to assign other quantity and units. For example, if

you measure automatically sizes of small particles by using an electronic device which converts their diameter to pulses whose height depends on particle size, you can set *Quantity/Units* text to Diameter/ μm . When you click *Apply* button, all entries are checked for consistency³ and accepted values are propagated to the pulse height histogram.

Advanced Pulse Filter

Channel	Parameter	Min	Max
Left channel	Height /arb.u	0	200
	Distortion /arb.u	0	100
	Width /us	0	2083.3
Right channel	Height /arb.u	0	200
	Distortion /arb.u	0	100
	Width /us	0	2083.3

This dialogue box provides PRA users with opportunities to select additional parameters of the pulses which can be used to produce histograms. This is a filter which does not change any information contained in *.pls file. Especially selecting ranges of pulse width and pulse distortion can be useful to find proper values for “Tolerance correction” to increase the resolution of the pulse height histogram. This filter, when used during data acquisition affects also 'played' pulses. If specific check box is not checked the settings in *Min* and *Max* edit boxes are ignored. Additionally you can also disable or enable use of this filter for each channel in *Data Acquisition and Analysis* dialogue.

³ All three values in any row can be simultaneously zeroes or non-zeroes and larger pulse height must correspond to larger energy. At least one row for each channel must contain non-zeroes data.

Mathematics in PRA

Mathematics in PRA.....	19
Pulse Recognition.....	19
Baseline method.....	19
Pulse shape method.....	20
Pulse shape correction.....	21
Calibration.....	22
Fit slope.....	22
Fit linear.....	22
Interpolation.....	23
Dead time calculations.....	23
Region Of Interest statistics.....	23
Gaussian correlation filter.....	25
Subtracting Background.....	26

In this chapter I would like to show⁴ mathematical formulas working behind the scenes in PRA. Some of them are commonly well-known and some are designed by myself specifically for use in PRA. I think this could be useful for PRA users to better understand how the program works and for programmers to use similar solutions in their own software.

Pulse Recognition

Baseline method

There are two methods implemented in PRA to recognise and analyse pulses. The first method is standard. First, we are looking for the baseline of the input signal. In PRA the baseline is calculated as an average of all samples in a buffer (usually few hundred samples) which are smaller than zero (assuming that the pulses are positive).

$$base = \frac{\sum_{i=1}^{i=max} y_i \cdot \epsilon_i}{\sum_{i=1}^{i=max} \epsilon_i}$$

where:

max is the number of samples in the buffer,

y_i is value of i^{th} sample,

ϵ_i equals to 1 if $y_i < 0$ and 0 otherwise.

Then PRA checks if $y_i - base$ exceeds the pulse threshold if so, corresponding i is marked as the beginning of the pulse. Now PRA is looking for the maximum value of $y_i - base$ until it becomes smaller than the pulse threshold. Then the corresponding i become the end of the pulse and the maximum value of $y_i - base$ its height.

⁴ It could be pleasure and challenge for students and other mathematically minded PRA users to proof some of those formulas.

This method of pulse recognition is simple, fast, and it works fine for pulse counting when good pulse height resolution is not important (Geiger-Müller counter). Poor pulse height resolution is the result of changes in the baseline value and the fact that only one sample decides about pulse height.

Pulse shape method

The second method of pulse analysis was designed to achieve the best possible pulse height resolution. I call it a 'pulse shape method'. This method relies on comparison of a specially prepared 'standard pulse shape function' with a small part of consecutive signal samples. The comparison is a simple dot multiplication of standard pulse shape vector and signal samples. PRA uses up to 16 points long⁵ discrete standard pulse shape function, which can be edited by hand or obtained automatically from the signal input. By editing pulse shape by hand the user can achieve similar effects of pulse recognition as in the previous (baseline subtracting) method or commonly used in commercial MCAs pulse integration method. However, the most powerful is the procedure where pulse shape representation is obtained automatically from the signal. In this case, PRA is looking for local maximum in input samples and saves it together with 30 samples before maximum and 29 samples after. All those samples are averaged and then 'normalised' to make useful standard pulse shape representation. In PRA normalisation is a linear function applied to the pulse shape to achieve two special properties:

1. Sum of all 60 pulse shape numbers must be equal to zero. This is done by subtracting the average. This feature of pulse shape function makes the result of the dot product to independent of any constant shift of the baseline.
2. The length of pulse shape vector (sum of squares of all pulse shape values) must be equal to the difference between its maximum and minimum components⁶. This makes pulse height to be of similar value as pulse height obtained using baseline method.

In a more formal mathematical way this can be represented by formulas:

$$\bar{s} = \frac{\sum_{k=0}^{k=59} s_k}{60}$$

$$S_k = \frac{(s_k - \bar{s}) \cdot h}{\sum_{k=0}^{k=59} (s_k - \bar{s})^2}$$

where:

s_k is k^{th} value of pulse shape before normalisation,

S_k is k^{th} value of pulse shape after normalisation,

h is a difference between the maximum and minimum value of pulse shape (the height of pulse shape itself). The reader can check that after this normalisation procedure $h = \sum_{k=0}^{k=59} S_k^2$ become

invariant under normalisation (it does not change after next normalisation) and is equal to the

⁵ The number 60 is arbitrary. In earlier versions of PRA it was 16 samples. You can limit number of entries in pulse shape definition by disabling some entries in *Pulse Shape* dialogue box.

⁶ Usually vectors are normalised to one.

difference between the maximum and minimum components of the standard pulse shape vector.

Now we can use our pulse shape to find dot product of our standard pulse shape and vector consisting of 60 consecutive samples:

$$h_i = \vec{y}_i \cdot \vec{S} = \sum_{k=0}^{k=59} y_{i+k} \cdot S_k$$

where:

i is a running index along samples in the input buffer,

h_i is a dot product of standard pulse shape vector and 60 consecutive samples vector.

PRA uses h_i as a new value of the sample and is looking if it is larger than pulse threshold to mark the beginning of a pulse and then identify pulse height and pulse width the same way as in the baseline method (base=0).

Pulse height calculated using pulse shape method is more accurate than using baseline method, but still, it can count pulses with distorted shape. To rectify this problem PRA uses pulse shape filter to count only those pulses whose shape is similar enough to the standard pulse shape. The procedure is very simple. Each time when h_i has been found to exceed pulse threshold PRA normalises 60 samples starting from y_i the same way as standard pulse shape. Then we subtract those 60 samples from the standard shape, each difference squared and added together. The result is a good measure how both, standard and current pulse shapes are similar. When it is zero, the shapes are identical. I call this value ‘distortion’⁷ of the pulse shape comparing to the standard shape. If this value is larger than the maximum tolerated distortion, PRA rejects the pulse.

The formula for distortion is:

$$d_i = (\vec{Y}_i - \vec{S})^2 = \sum_{k=0}^{k=59} (Y_{i+k} - S_k)^2$$

where

Y_{i+k} are Cartesian coordinates of normalised 60 consecutive samples vector (starting from the i^{th} sample),

d_i is the squared difference between the current samples and the standard pulse shape (distortion).

Pulse shape correction

When analysing dependence between measured pulse height and its distortion I found it linear. In this case we can correct measured pulse height by applying a simple formula to achieve better resolution in the pulse height histogram. We can correct pulse height as follows:

$$h_c = h(1 + c \cdot d)$$

where

h_c is corrected pulse height,

h is measured pulse height,

⁷ It also can be named more mathematically correctly as a squared distance between two points in 60 dimensional Euclidean space or a squared length of a vector being difference of two Euclidean vectors.

c is correction factor from *Correction* edit box in *Data Acquisition and Analysis* dialogue.

d is distortion of the pulse.

For different pulse shapes the best correction factor can be determined empirically by changing its value and observing when the standard deviation of the peak in pulse height histogram reaches a minimum value. After changing correction factor you will need to perform calibration procedure again as not only the standard deviation but also the mean value of the peak is changing.

Calibration

Signal samples from the sound interface which are analysed by PRA usually come as 16 bits, 24 bits, and 32 bits integer numbers. PRA converts all of them to a real number from (-100, +100) interval. Those numbers do not have any physical units (they are proportional to the input voltage) and PRA uses for them so-called arbitrary units (arb.u.). Pulse height we also express in arbitrary units. The height of a pulse coming from the detector usually depends on energy deposited by elementary particle inside the detector.⁸ This dependence is not very strict and for certain energy deposited in the detector, there is possible the whole range of output pulse heights which produce a peak in pulse height histogram. The shape of this peak can be described by so-called normal or Gaussian distribution. By calibration, we understand the dependence of the position of this peak and corresponding energy deposited in the detector (which very often is a full kinetic energy of the detected particle). For example, well-known source ^{137}Cs produces gammas with the energy of 662 keV. If this gamma interacts with the detector and deposit all its energy, then pulses corresponding to this event will form a Gaussian peak in the pulse height histogram. If the mean value of this peak is 20 arb.u. then our calibration function will assign 662 keV to 20 arb.u. and PRA will display abscissa on the pulse height histogram in keV rather than arbitrary units. PRA uses three methods of calibration.

Fit slope

This is the simplest (and very good) method to calibrate the detector. Most of the detectors show quite good proportionality between energy deposited in the detector and pulse height. In this case function $y = ax$ will be a good choice. PRA uses weighted least squares method to find parameter a . From *Calibration* dialogue box we have up to 8 calibration entries for each channel: (*Mean* of the peak in arbitrary units, *Standard Deviation SD* in arbitrary units, *Quantity* in quantity units).

Let's name it as (x_i, σ_i, y_i) .

Using least squares method we can find

$$a = \frac{\sum_i \frac{x_i y_i}{\sigma_i^2}}{\sum_i \frac{x_i^2}{\sigma_i^2}}$$

where i is running over all (non-zero) calibration data points.

Fit linear

In this case fitting function is linear: $y = ax + b$. This is more general form than fitting slope and should be used if you know well some low energy calibration points.

⁸ This is the most common use of PRA, but you can use a different transducer which produces pulses dependent on different physical quantity, not necessary energy.

The parameters **a** and **b** are calculated using formulas:

$$a = \frac{\sum_i \frac{x_i}{\sigma_i^2} \sum_i \frac{y_i}{\sigma_i^2} - \sum_i \frac{x_i y_i}{\sigma_i^2} \sum_i \frac{1}{\sigma_i^2}}{\left(\sum_i \frac{x_i}{\sigma_i^2}\right)^2 - \sum_i \frac{x_i^2}{\sigma_i^2} \sum_i \frac{1}{\sigma_i^2}}$$

$$b = \frac{\sum_i \frac{x_i}{\sigma_i^2} \sum_i \frac{x_i y_i}{\sigma_i^2} - \sum_i \frac{x_i^2}{\sigma_i^2} \sum_i \frac{y_i}{\sigma_i^2}}{\left(\sum_i \frac{x_i}{\sigma_i^2}\right)^2 - \sum_i \frac{x_i^2}{\sigma_i^2} \sum_i \frac{1}{\sigma_i^2}}$$

Interpolation

This calibration method should be used if your detector is not linear e.g. calibration function slope is changing from low energies to high energies. In this case, PRA uses simple linear interpolation between calibration data points including the point (0,0) at the beginning and extrapolating the last pair of calibration data points for higher energies. Linear interpolation for x lying between two

calibration data points $x_i \leq x \leq x_{i+1}$ can be expressed as: $y = \frac{y_{i+1} - y_i}{x_{i+1} - x_i} x + \frac{x_{i+1} y_i - x_i y_{i+1}}{x_{i+1} - x_i}$.

Dead time calculations

Dead time is an unavoidable property of any detector and data acquisition system. Dead time is a minimum time between two consecutive pulses to be recognised by data acquisition system. The dead time of the system can be affected by detector itself (as recovery time in GM counter, scintillation time in NaI crystal or plastic scintillator), analogue electronics (amplifiers, filters, and shaping devices), and digital electronics (including ADC, data storage time etc.).

In the case of our “PRA” program, the mainspring to the dead time is the width of the pulse which can't be too small to be properly sampled by the computer's sound card. PRA uses time interval statistics to find the dead time of the system. A manifestation of dead time phenomenon in time interval histogram are empty and less populated than expected bins at the beginning. If counting rate is constant, we are expecting that distribution of time interval will follow exponential decay curve with the maximum at first bin.

How PRA is analysing this histogram to find a dead time of the apparatus?

1. We are looking for the bin with a maximum number of counts. Let's name corresponding time interval T .
2. Next we are counting all events in regions $[0, T)$, $[T, 2T)$, and $[2T, 3T)$. Let's call them s_0 , s_1 , and s_2 correspondingly.
3. Now we can calculate dead time W using a formula:

$$W \approx \left(1 - \frac{s_0 s_2}{s_1^2}\right) T$$

Region Of Interest statistics

Region Of Interest (ROI) is any range of consecutive bins in pulse height histogram. Usually, we

use it to select a peak. The most interesting parameters calculated by PRA are the mean value, standard deviation, gross number of counts, and net numbers of counts. The gross number of counts in ROI is just a sum of all counts in selected region. Usually, the peak is not built with the base at zero but is sitting on the top of what we call a background (not necessary coming from a background radiation). By background, we understand a slowly changing profile of the histogram. The net number of counts is calculated by subtracting background counts from gross counts. PRA assumes that background under the peak is changing linearly. To calculate this line's parameters firstly we take a few (10% of the width of ROI) samples around the beginning and calculate their average value and do the same at the end of ROI. Next, we subtract the area of the trapezoid which is built on those new points from the gross number of counts to get the net number of counts. The mean value and standard deviation are calculated using net counts which are more meaningful than the raw counts. More precisely we can describe the whole process using formulas:

$$\begin{aligned}
 Gross &= \sum_{i=R_b}^{i=R_e} c_i \\
 \bar{a}_b &= \frac{\sum_{i=R_b+0.1(R_e-R_b)}^{i=R_b+0.1(R_e-R_b)} c_i}{0.2(R_e-R_b)+1} \\
 \bar{a}_e &= \frac{\sum_{i=R_e-0.1(R_e-R_b)}^{i=R_e-0.1(R_e-R_b)} c_i}{0.2(R_e-R_b)+1} \\
 Net &= Gross - \frac{(\bar{a}_b + \bar{a}_e)(R_e - R_b + 1)}{2} \\
 n_i &= c_i - \left(\bar{a}_b + \frac{(i - R_b)(\bar{a}_e - \bar{a}_b)}{R_e - R_b} \right) \\
 Mean &= \sum_{i=R_b}^{i=R_e} \frac{n_i}{Net} i \\
 \sigma = SD &= \sqrt{\sum_{i=R_b}^{i=R_e} \frac{n_i}{Net} (i - Mean)^2} \\
 &\text{for } Net \neq 0
 \end{aligned}$$

where:

R_b is the beginning bin of ROI

R_e is the end bin of ROI

c_i is a number of counts in the i^{th} bin

n_i is a net number of counts in the i^{th} bin

σ is a standard deviation of the peak in the ROI

Gaussian correlation filter

In many cases, the only purpose of pulse height histogram is to find characteristic photoelectric peaks which can help to identify radioactive isotopes in your source. The best method is to collect data for such long time that pulse height histogram becomes a very smooth curve and all peaks become clearly visible. The problem using this method is obvious; usually, you have to collect your data for a very long time. This produces another problem with long term stability and temperature dependency of your detector. Some people try to solve this problem by smoothing data using simple averaging consecutive bins. Although it can sometimes help to see peaks which can be hidden under normal statistical data fluctuation, but usually it also leads to the identification of false peaks and smears the data. This method is equivalent to just larger bin size. A new method used by PRA is filtration of the pulse height histogram data in the more scientific way. Most of the nuclear detectors are working according to simple principle; the number of detectable particles produced in the detector is proportional to the kinetic energy of the primary particle which enters the detector. In the case of scintillation detectors, it will be a number of photons produced during scintillation, in the case of gas proportional counter it will be a number of positive ions and electrons or in the case of semiconductor a number of electron-hole pairs. A transducer attached to the detector (photomultiplier, thin wire anode or electrode) produce a signal which is proportional to the number of detectable particles. This number undergoes certain statistical fluctuation which can be described as Poisson distribution. This is a distribution which has a very simple and useful property; its standard deviation is a square root of the mean value. We will use this property to identify the peaks in our pulse height histogram. If the number of detected particles in one pulse is large, then Poisson distribution can be simply replaced with a normal (Gaussian) distribution which is more convenient for calculations. We still assume that peak standard deviation is proportional to the square root of the mean value (mean bin of the peak or energy of detected particle). PRA does all calculations automatically in real time, you have just to tell what is the standard deviation for peaks that you use for calibration (this is the main reason for a new column in the calibration dialogue box). For filtering peaks PRA uses a similar technique as for filtering pulses from the sound signal, it performs just dot product operation of pulse height histogram data and especially normalised Gaussian shape.⁹ We use the discrete Gaussian shape in range $(-2\sigma, 2\sigma)$ which covers 95% of the peak. The Gaussian shape is normalised this way that the sum of all its values is zero (subtracted average value) and the sum of all squares of the (new) values is one. Because of this normalisation and the fact that Gaussian is symmetrical with respect to the mean, the dot product does not depend on data shift up or down as well as when a peak is lying on the slope or not. This makes our operation result not sensitive to the background counts. The dot product of Gaussian shape (with standard deviation dependent on the bin number) is performed along all data in the pulse height histogram. The result is called here Gaussian correlation and its value is printed on the same pulse height histogram display as red colour points. All negative values of the Gaussian correlation are plotted as zero. Gaussian correlation curve is usually very smooth even with not so large number of counts in the histogram bins and its local maximum quite accurately indicate mean values of the peak. PRA uses scaling to display Gaussian correlation curve to be well visible together with pulse height histogram data.¹⁰ You can use page up and page down keys to change vertical scale or just use a logarithmic scale for your convenience to make the Gaussian curve better visible. PRA uses standard deviation which is calculated from all non-zero SD values in the calibration dialogue box. The distance between points where Gaussian correlation curve under the peak crosses zero

⁹ This operation can be also named as calculating the discrete correlation of the histogram and Gaussian filter.

¹⁰ If the standard deviation is chosen properly, then Gaussian correlation value at the centre of the peak should be in range (or slightly below) of the number of counts (subtracting the background). However, it is not crucial to use the right value of the standard deviation. If SD is too small, then Gaussian correlation curve shows more irregularities. This can be even beneficial to recognise two close peaks.

approximately equals to 2.6 standard deviations (a little larger than FWHM). All this can be more precisely described using mathematical formulas:

$$\text{for } k \in (-2\sigma_i, 2\sigma_i) \quad Gs_k = \exp\left(\frac{-k^2}{2\sigma_i^2}\right)$$

$$Gs_k = Gs_k - \overline{Gs}$$

$$Gs_k = \frac{Gs_k}{\sum Gs_k^2}$$

$$Gc_i = \sum_{k=-2\sigma}^{k=2\sigma} c_{i+k} Gs_k$$

where:

σ_i is an expected standard deviation of the peak with mean value at i^{th} bin,

Gs_k is the k^{th} element in Gaussian shape,

Gc_i is the i^{th} element of the Gaussian correlation curve,

c_i is number of counts in the i^{th} pulse height histogram bin.

Subtracting Background

Starting with version 19 PRA has a feature to subtract the background from the pulse height histogram. To use this feature start collecting data for the background file without any radioactive source close to the detector. All the settings should be exactly the same as you will use with the source being present. Take a long sample of data to achieve a smooth spectrum. Usually, 10 000 000 pulses per channel are long enough. Save this run as .pls file for a future use. Next, from the menu choose *Action* → *Set Data As Background*. Now in the “Data Acquisition and Analysis” check the *Subtract background* checkbox and start data acquisition with the source present at the detector. If you already have saved the data from the source, simply open the data file. The background will be subtracted from the pulse height histogram proportionally to the acquisition time. You can use *Subtract background* checkbox to toggle the spectrum with and without background subtracted. When you save your data file, the background is not saved. If you like to open saved file with the background subtracted open first the background file, set it as the background and then open the required data file. When you are exporting pulse height histogram the background is taken into account depending on the status of the *Subtract background* checkbox. PRA is not checking if the background and the data files are taken exactly at the same condition of your detector and PRA's settings, it simply is subtracting two histograms:

$$H_b(c) = H(c) - \frac{t_d}{t_b} \cdot B(c) \quad \text{if it is positive, otherwise } H_b(c) = 0$$

where

$H_b(c)$ is a number of counts in bin c with subtracted background,

$H(c)$ is a number of counts in bin c without subtracted background,

$B(c)$ is a number of background counts in bin c ,

t_d is a data acquisition time and

t_b is a background acquisition time.

Keyboard Shortcuts

PRA uses following commands which can be accessed by keyboard shortcut:

1. **→ (right arrow)** – increase current position in an active histogram by one.
2. **← (left arrow)** – decrease current position in an active histogram by one.
3. **↑ (up arrow)** – horizontal zoom out.
4. **↓ (down arrow)** – horizontal zoom in.
5. **Page Up** – vertical zoom in. Can be also done with the Mouse Wheel rotation.
6. **Page Down** – vertical zoom out.
7. **A** – start data acquisition.
8. **C** – continue data acquisition.
9. **S** – stop data acquisition.
10. **Space** – Start or stop 'playing' pulses.
11. **.** (period) – Rises the pitch of the played sound.
12. **>** – Increases the rate of the “played pulses”.
13. **,** (comma) – Falls the pitch of the played sound.
14. **<** – Decreases the rate of the “played pulses”.
15. **B** – mark the beginning of 'Region Of Interest' in [Pulse Height Histogram](#).
16. **E** – mark the end of 'Region Of Interest'.
17. **K** – mark all ROIs in the right channel identical to the left channel ROIs.
18. **R** – toggles display of the sum of counts in all ROIs.
19. **D** – mark automatically very wide ROI around Gaussian correlation peak (D for double).
20. **F** – mark automatically wide ROI around Gaussian correlation peak (F for full).
21. **G** – mark automatically medium ROI around Gaussian correlation peak (G for Gaussian).
22. **H** – mark automatically narrow ROI around Gaussian correlation peak (H for half).
23. **L** – toggles automatic selection of the last entry in [Counting Rate vs Time](#) window.
24. **T** – toggles normal and auto trigger modes in “Audio Input” window.
25. **U** – toggles arbitrary and calibrated units in pulse height histogram.
26. **Delete** – deletes ROI at the current position in pulse height histogram.
27. **Delete + Shift** – deletes all ROIs in pulse height histogram.
28. **Q** – opens *Information* dialogue box which displays active window’s information as text which can be read by “JAWS” program. To quit this dialogue box press *Enter* key.
29. **F1** – Toggles all “Save” and “Export ...” menu items to active or greyed status during data acquisition without stopping. Then you can save the acquired data to the file and its name becomes predefined for auto-saving in the case of reaching the limit of data acquisition or malfunction of the sound interface.
30. **F2** – Toggles additional automatic saving of the data in 1 h intervals to the predefined file. This can be useful if we expect the data acquisition for long time and try to avoid data lost due to the problems with the computer power supply. The check mark at “Save” menu item indicates active automatic saving. The F2 key has effect only if automatic save is already active after using F1 key and saving file once.

File Structures

All files exported from PRA are in tab separated text format (ASCII).
Other files are in binary formats as follows:

Main data file *.pls starts from the header:

```
typedef struct PlsHeader {  
    unsigned long    PulseTag; //"Puls" 4 bytes  
    unsigned long    NumberOfPulses[2]; //2*4 bytes  
    unsigned long    PRA version; //4 bytes  
    long long        AcquisitionTime; //InTimeFrames 8 bytes  
    unsigned long    DataOffset; //4 bytes  
    unsigned long    Reserved; //4 bytes  
    SETTINGS         AllSettings; //6848 bytes  
} PLSHEADER; //6880 bytes
```

following by 'numberOfPulses' pulses:

```
typedef struct Pulse {  
    long long        Begin;  
    unsigned long    Width;  
    unsigned long    Height;  
    unsigned long    Distortion;  
    unsigned long    Coincidence;  
} PULSE; //24 bytes
```

Settings file (*.ini):

```
typedef struct Settings {  
    AUDIOSETTINGS    CurAudioSettings; //2*16 bytes  
    double           SettingsData[2][14]; //2*14*8 bytes  
    char             CheckBox[2][11]; //2*11 bytes  
    char             CoincidenceMode; //1 byte  
    char             FilterCheckBox[2][3]; //2*3 bytes  
    char             Comment[995]; //995 bytes  
    WINDOWPLACEMENT  WinPlacement[7]; //7*44+4(filler)=312 bytes  
    double           Filter[2][3][2]; //2*3*2*8 bytes  
    double           PulseShape[2][60]; //120*8 bytes  
    char             ShapeCheckBox[2][60]; //120 bytes  
    double           CalibrationData[2][16][3]; //2*16*3*8 bytes  
    char             EnergyUnits[2][31]; //62 bytes  
    char             CalibrationMode[2]; //2 bytes  
    ROI              Roi[2][32]; //64*56 bytes  
} SETTINGS; //7184 bytes
```